

# Cancer Programme Update

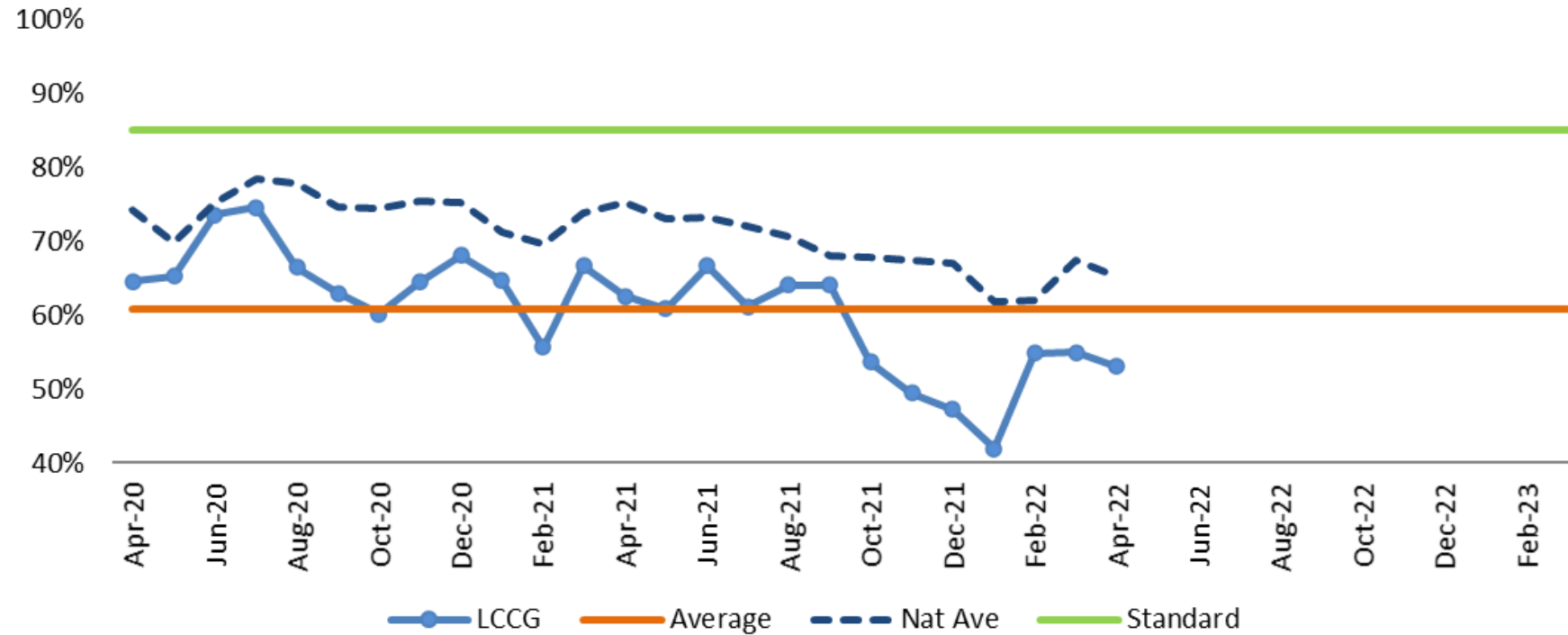
## Health Scrutiny Committee

### 13.07.22

# Agenda

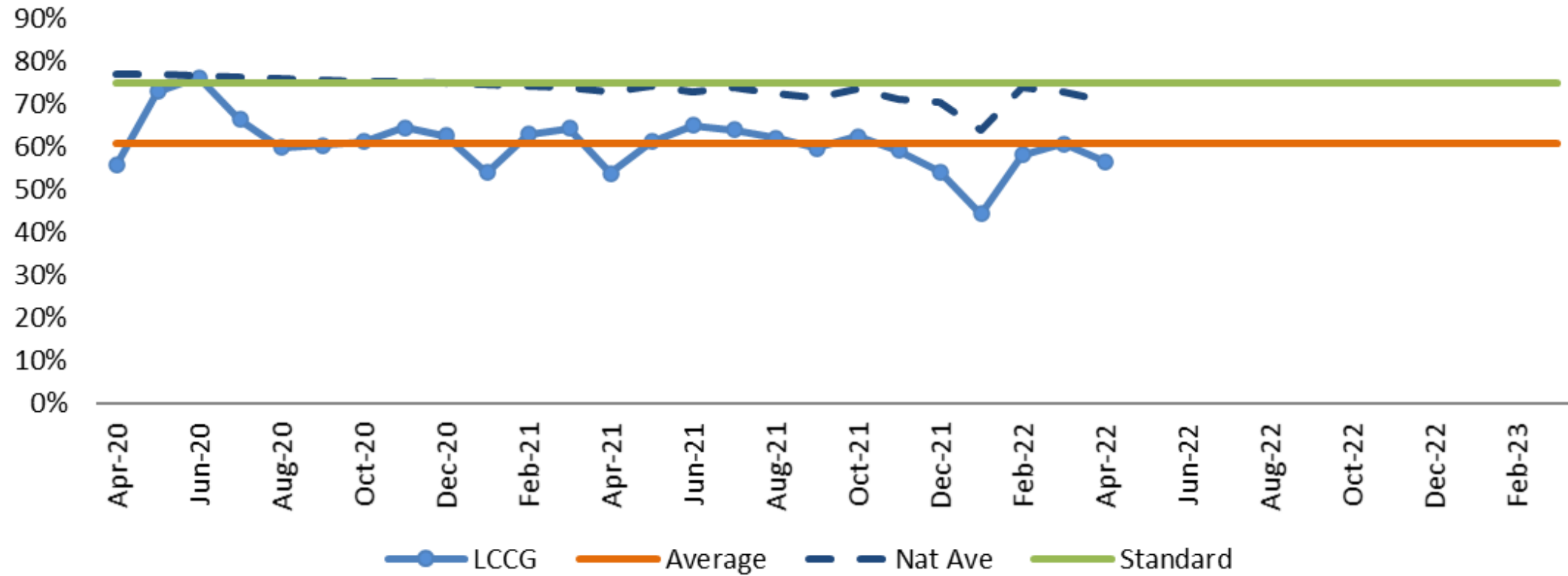
- System Performance
- Benchmarking
- Support from the Alliances
- Governance structure for ICB
- Risk and issues
- Improvements – NLAG / NWAFT/ ULHT
- Future work
- Living with Cancer Programme

# Patients receiving treatment for cancer within 62 days of an urgent GP referral – Lincolnshire ICB



# 28 Day Faster diagnosis standard- % of patients told cancer diagnosis outcome within 28 days

Page 28



# 62+ & 104+ Backlog – May 2022\*

	ULHT	NWAFT	NLAG
Patients waiting over 104 days	139	109	43
Patients waiting over 62 days	516	374	190

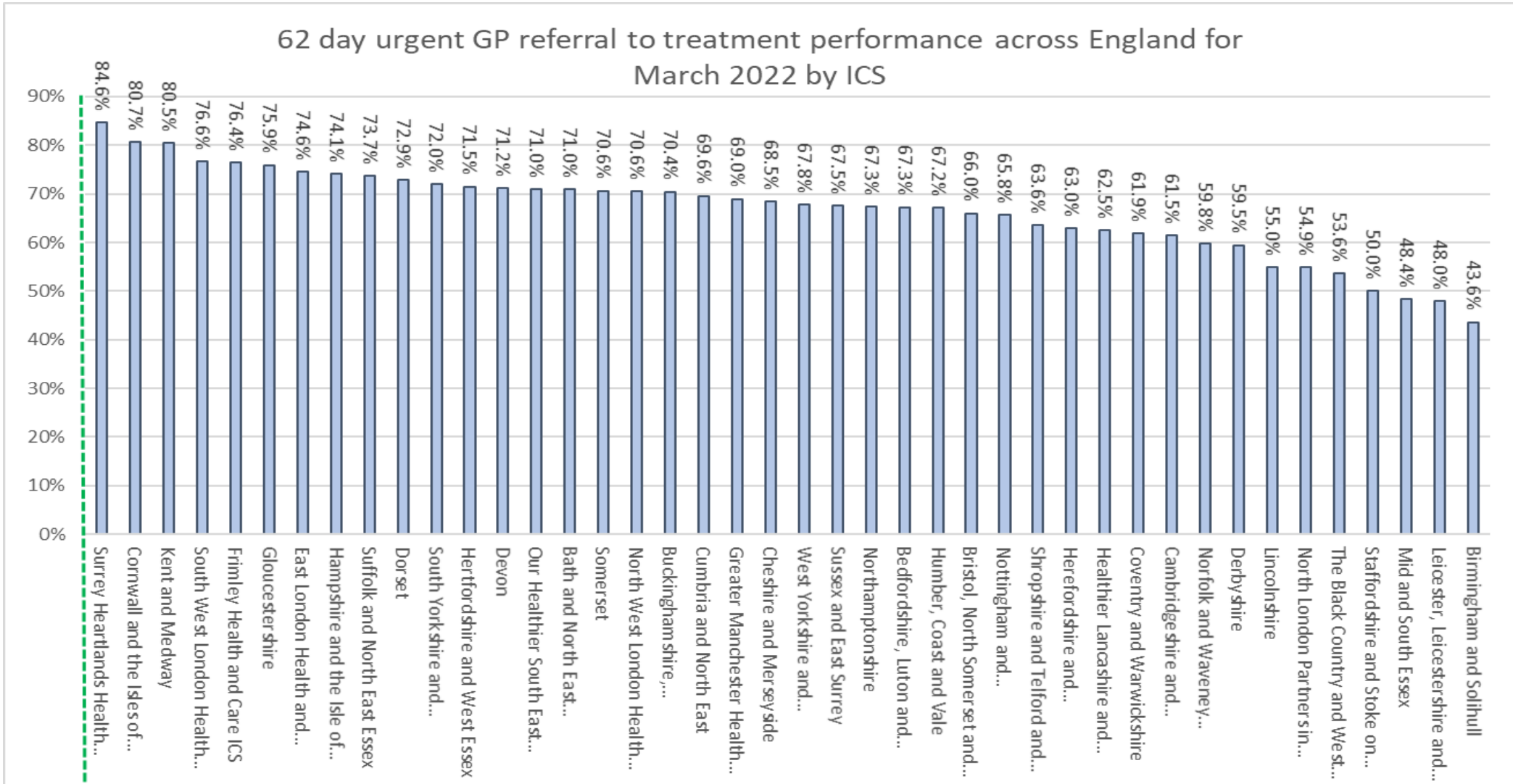
ULHT – United Lincolnshire Hospital Trust

NWAFT – North West Anglia Foundation Trust

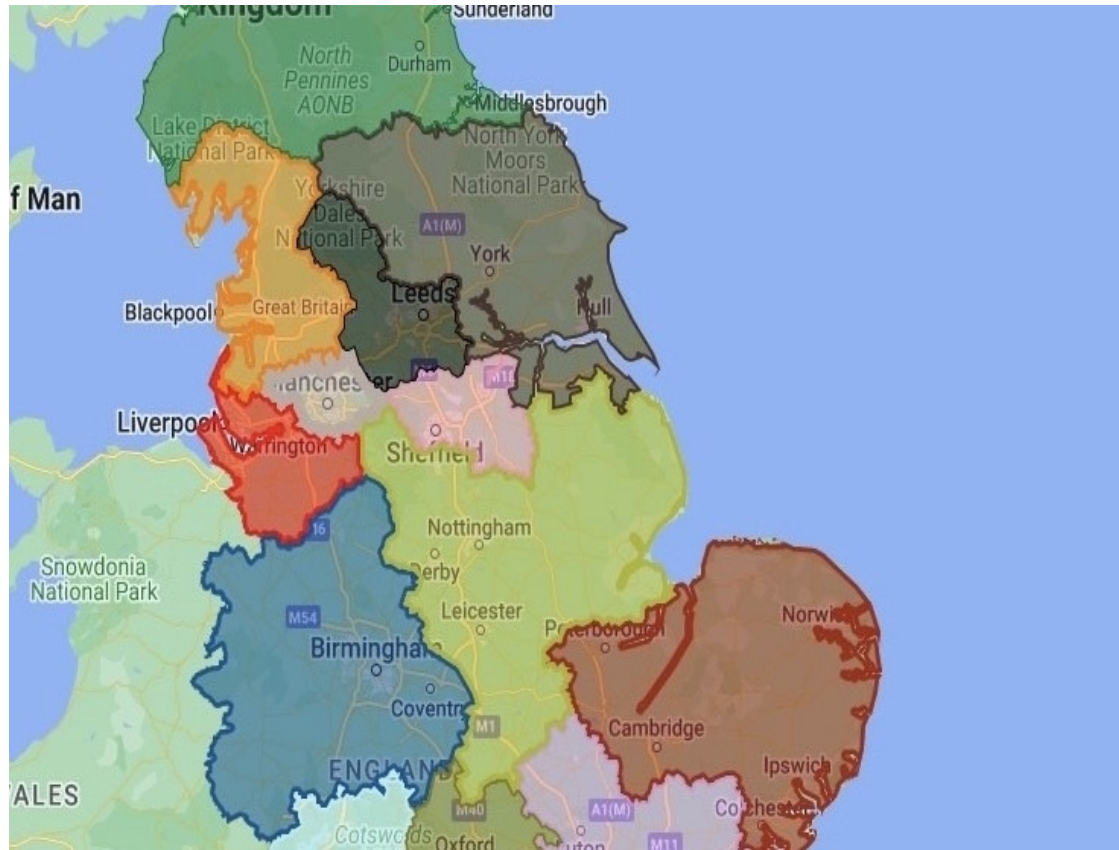
NLAG – North Lincolnshire and Goole Foundation Trust.

\*May 2022 – most recent validated performance

# Benchmarking Lincolnshire's performance



# Cancer Alliance support in Lincolnshire



- East Midlands Cancer Alliance
- Cambridge & Peterborough Cancer Alliance
- Humber and North Yorkshire Cancer Alliance
- Finance for Lincolnshire ICB allocated via East Midlands Cancer Alliance – System Development Funding and Rapid Diagnostic Service Funding.

# Governance Structure

- ICB oversight of performance through monthly Lincolnshire Cancer Board.
- Monthly meetings with NLAG & NHS Humber and North Yorkshire ICB
- Fortnightly meetings with NWAFT & Cambridgeshire and Peterborough Integrated Care Board
- Lincolnshire ICB attendance at NWAFTs monthly cancer board.
- Lincolnshire ICB oversight and implementation of improvement work at ULHT.



# Challenges & Opportunities

## Challenges

- Urgent and Emergency Care pressures
- Covid 19 impact both current and future
- Workforce challenges to recruit nationally and locally
- Increased demand post Covid

## Opportunities

- Good system working to avoid and or alleviate pressure on UEC pathways and improve discharges
- Further vaccine rollout in September
- Increased health & wellbeing offer to staff
- Alternative pathways for low risk patients i.e. Breast pain pathway
- Utilisation of new simulation tool to demonstrate impact of additional finance

# Improvements - NWAFT

- Implementation of neck lump clinics
- Implementation of TPLA (transperineal biopsy under local anaesthetic)
- Roll out of RDS (Rapid Diagnostic Service) virtual assessment service
- Phase 1 of the Galleri Trial (new blood test to see if it can help the NHS to detect cancer early)
- Additional clinical support for skin pathway and endoscopy
- Cancer recovery plan in place following COVID

# Improvements - NLAG

- Dedicated cancer transformation team appointed
- Service Improvement plans are being developed
- Implementation of Best Practice Timed Pathways in Lung, Upper GI, Head & Neck
- Lower Gastrointestinal RDS pathway in place since June 21.
- Non Site Specific pathway implemented mid May 22.
- Implementation of single MDTs (multi disciplinary team meetings) across the Humber
- More CNS (Cancer Nurse Specialists) recruited through funding from Macmillan Cancer.

# Improvements - ULHT

- Implementation of the Non-site specific pathway – July 2021
- Surgical robot purchased January 2022
- BPTP (Best Practice Timed Pathway) analysis of 4 key tumour sites
- Galleri Trial Phase 1 – completed.
- Development of a simulation tool to model the backlog and interventions
- Recruitment to roles to improve performance utilising SDF funding
- Increase in cervical screening uptake using video text trial
- Implementation of the 90 minute standard
- Roll out of breast pain pathway and Spot clinics

# Future work

- Colorectal deep dive
- Implementation of Best Practice Timed Pathways across all tumour sites
- Supporting GPs to recognise early signs and symptoms of cancer
- Work locally and regionally to roll out initiatives to support early diagnosis to improve survival rates
- Galleri Trial Phase 2
- Roll out TLHCs trial (Targeted Lung Health Checks)

# Lincolnshire Living with Cancer Programme

## Aim:

- Develop person-centred, local support for people living with cancer, their carers and significant others in Lincolnshire.

By March 2023 implement seven Personalised Follow up Pathways (PFUP) in breast, prostate, colorectal, endometrial, thyroid, lymphoma and skin, including remote monitoring.

To do this we will:

- Implement PFUP including remote monitoring in breast, prostate, colorectal and endometrial by 30<sup>th</sup> June 2022, thyroid and lymphoma by 30<sup>th</sup> September 2022 and skin by 31<sup>st</sup> March 2022
- Implement the Lincolnshire Personalisation Model (Triage/Record/Refer/Navigate) at end of treatment in priority tumour sites by 31<sup>st</sup> March 2023.

# Lincolnshire Living with Cancer Priorities set by NHSE

By March 2023 implement the four living with cancer elements:

- holistic needs assessment and personalised care and support planning
- end of treatment summary
- cancer care review
- access to health and wellbeing interventions.

To do this we will:

- Implement the Lincolnshire Personalisation Model (Triage/Record/Refer/Navigate) at end of treatment.
- Work with PCNs and Primary Care teams to improve the quality of cancer care reviews.
- Integrate Community Cancer Care Co-ordinators in all Neighbourhood Working Teams (NWTs).
- Implement model for different levels of support for all health & wellbeing/quality of life elements
- Map health and wellbeing assets in Lincolnshire to understand available support and identify gaps.
- Launch Lincolnshire Cancer Support website.



Address the finding of the National Cancer Patients Experience Survey (NCPES) and the U16 Cancer Patient Experience Survey (U16CPES)

To do this we will:

- Each year work with the Lead Cancer Nurse at ULHT and her team to analyse the results of the National Cancer Patient Experience Survey.
- Draw up an action plan to inform the focus of our work.

Address the finding of the Cancer Quality of life survey.

To do this we will:

- Promote uptake of the Cancer Quality of Life Survey
- Analyse the results of the survey.
- Act of the results of the survey in the future when available at Trust level.

## Lincolnshire Living with Cancer Programme

To support the delivery of the Lincolnshire Living with Cancer Programme, we have carried out work within enabler workstreams:

We have:

- Developed and are delivering the Lincolnshire Living with Cancer strategies, and Digital and Workforce Development strategies.
- Commissioned a formative evaluation to understand the changes brought about by the programme.
- Used quantitative and qualitative data to measure impact.
- Established and supported Co-Production Groups in Sleaford and Mablethorpe.
- In collaboration with ULHT established the Lincolnshire Cancer Patient Panel.

## Lincolnshire Living with Cancer Programme Key Risks

- Future funding requirement
  - Mitigation developing a business case to request funding for 7 roles to support LWC programme from the ICB

This page is intentionally left blank